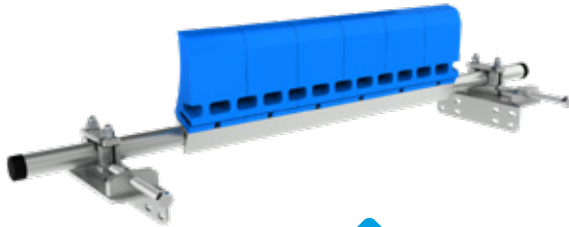
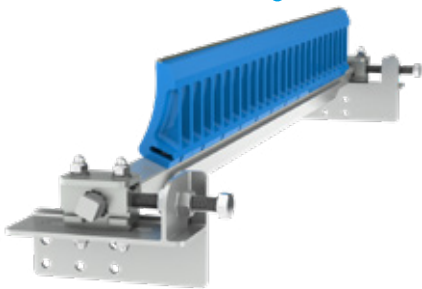


RacloFlex Z²



RacloFlex Z² HD



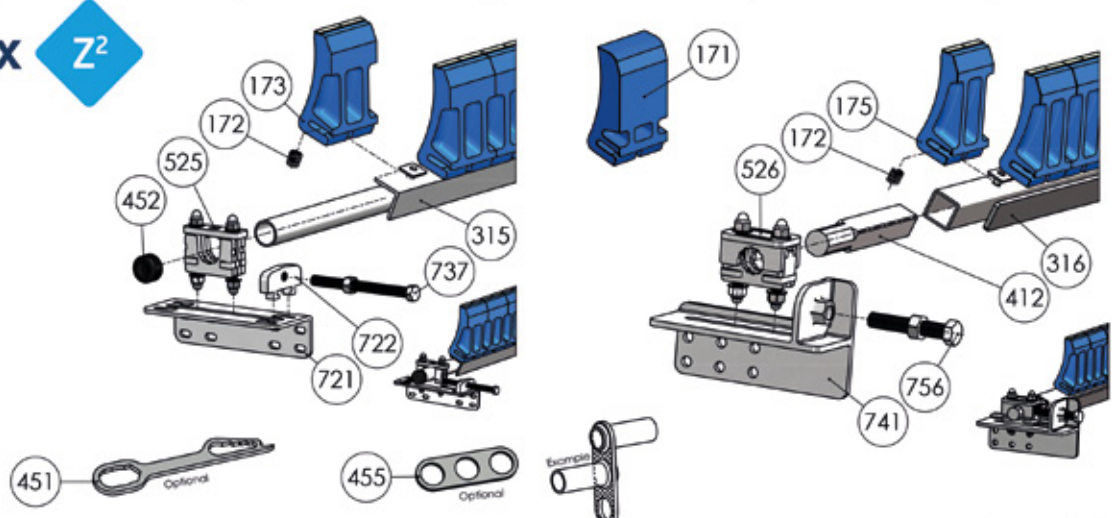
05/2023

TECHNICAL DATA SHEET

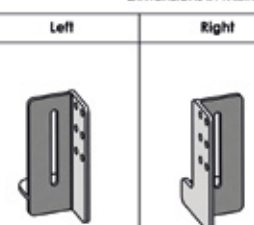
Position	Primary cleaner
1 or 2 ways working	1 way recommended
Maximum speed	Z ² : 2m/s Z ² HD: 4m/s
Blade type	Multi-blade independent scraper modules
Tension	Stainless steel springs
Wear compensation	Automatic spring elongation
Pressure	Pushing screw
Blade fixing	Notch with auto-ejection security
Mechanical splicing	Not recommended (tungsten carbide)
Tungsten carbide quality	Abrasion resistant = 93 HRA Impact resistant = 66 HRA
Polyurethane quality	25mm ³ ISO4649
Structure quality	Steel ST37 Zinc plated (optional stainless steel)
Shaft size	Z ² : Ø42,4 th.4 Z ² HD: 50x50 plain
Bolts quality	Stainless steel
Ambient temperature range	-10°C / +50°C wet / +70° dry
Product temperature range	0°C / +50°C

RacloFlex Z² Spare parts

200127 101 - EN

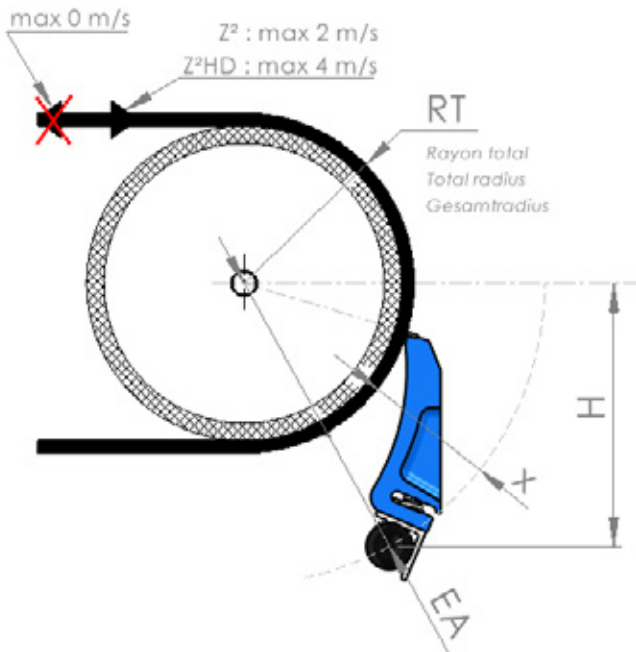


Dimensions in millimeter



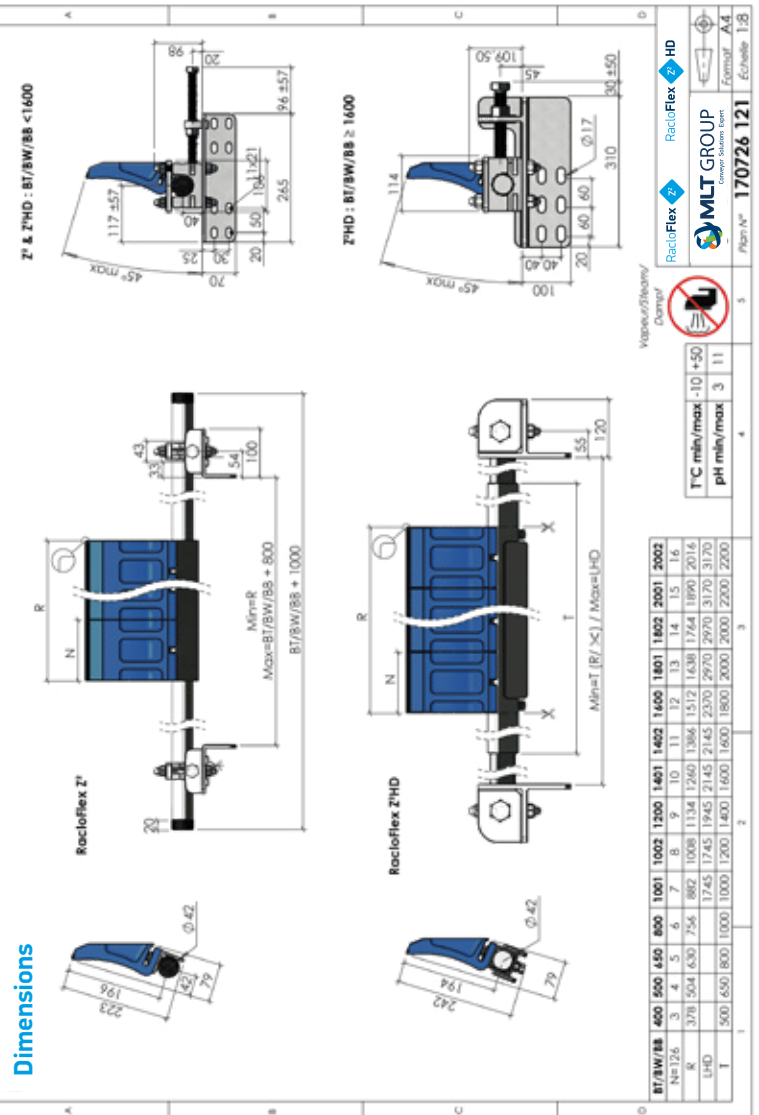
N°	Designation	Laterality	Variant(s)	Quality	Bell	Bloc Qty 173	Structure 315/316 Length	Axle 412 Length	Bracket Size	Left		Right	
172	Spring Z			SST	400	3	1400		721+525				
173	Blade Z ² - Tungsten 3mm + Springs		171: PUR only 174: Tng.Impact	Tng3 + PUR	500	4	1500		721+525				
					650	5	1650		721+525				
					800	6	1800		721+525				
					1001	7	2000		721+525				
					1002	8	2000		721+525				
					1200	9	2200		721+525				
315	Structure Z ²		335: SST	Galva.ST	1400	10	2400		721+525				
316	Structure Z ² HD		336: SST	Galva.ST	1400	10	2400		721+525				
412	Axle 40x40		432: SST	Galva.ST	1402	11	2400		721+525				
451	Multitool wrench			Galva.ST	1401	10	1200	600	721+525				
452	Cap			PVC	1402	11	1600	600	721+525				
455	Shift ring			Galva.ST	1801	13	2000	1000	741+526				
525	Bearing QL - Medium		535: SST	Galva.ST	1802	14	2000	1000	741+526				
526	Bearing QL - Large		536: SST	Galva.ST	2001	15	2200	1000	741+526				
721	Angle Medium only		731: SST	Galva.ST	2002	16	2200	1000	741+526				
722	Angle bridge Medium		732: SST	Galva.ST									
737	Pressure ball Medium M16x190			SST									
741	Angle Large	L or R	751: SST	Galva.ST									
756	Pressure ball Large M24x140			SST									

Installation position



RT	100	125	150	175	200	225	250	275	300	325
x	145	135	125	120	110	110	100	100	95	90
EA	240	255	275	290	310	330	350	370	395	415
Hmin	230	235	245	250	260	265	275	280	290	295
Hmax	240	255	275	295	310	330	345	365	380	400

RT	350	375	400	425	450	475	500	525	550	575
x	90	85	85	80	80	80	75	75	75	70
EA	440	460	485	505	530	550	575	600	625	650
Hmin	300	310	315	325	330	340	345	350	360	365
Hmax	415	435	455	470	490	505	525	540	560	575



Vapeur/Steam / Dampf

RacloFlex Z²

RacloFlex Z²HD

MLT GROUP

www.mltgroup.com

Formaf. A.4

Plan N° 170726 121

Echelle 1:8

T°C min/max -10 +50

pH min/max 3 11



Incompatible avec vapeur
Not compatible with steam
Nicht kompatibel mit Dampf



Incompatible sur tambour relief
Not compatible on asperity drum
Nicht kompatibel mit Rauheit Trommel



Incompatible bande réversible
Not compatible reversible belt
Nicht kompatibel mit Reversierbänder

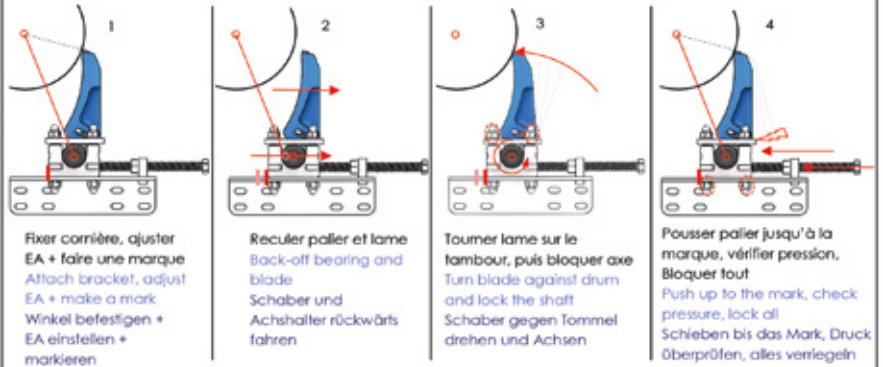


Incompatible avec fil, tissu ou feuille
Not compatible with wire, cloth or sheet
Nicht kompatibel mit Draht, Stoff oder Blatt



Ne jamais frapper le carbure de tungstène / Never strike tungsten carbide / Schlagen Sie niemals auf dem Hartmetall

Réglage étape par étape / Adjustment step-by-step / Einstellung Schritt für Schritt

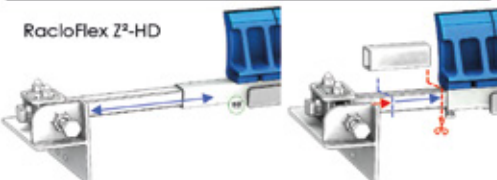


Axes et réglage de la largeur / Axes and width adjustment / Achsen und Breitereinstellung

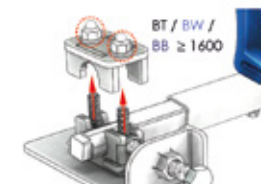
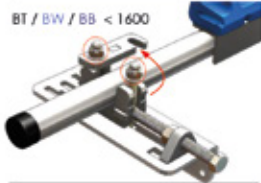
RacloFlex Z²



RacloFlex Z²-HD



Désengager / Desengage / Ausrücken



Mise en pression / Pressurization / Druck Einstellung



Pression insuffisante
Insufficient pressure
Druck unzureichend

Bonne pression
Correct pressure
Druck in Ordnung

Pression trop forte
Pressure too high
Druck zu stark

Remplacement / Replacing / Ersatz

